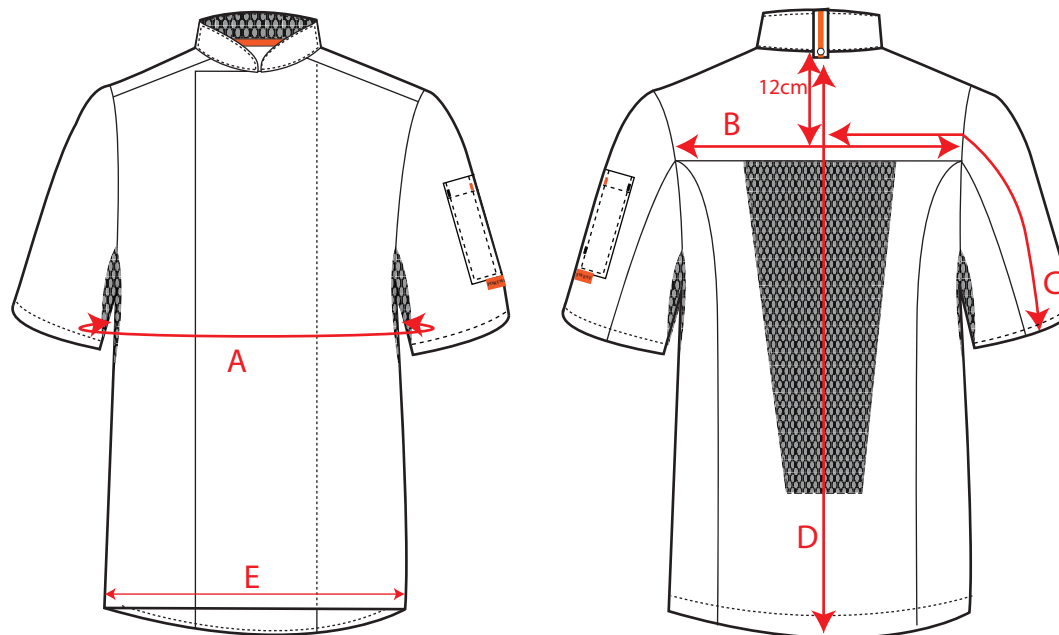


STYLE NO: C738

DESCRIPTION: MeshAir Pro Jacket S/S

FABRIC: Kingsmill Texpel 190g  
MeshAir Pro 140g

COLOUR: Black, Grey  
White



	SIZE	SMALL	MEDIUM	LARGE	X LARGE	XXLARGE	XXXLARGE
See Diagram		92-96	100-104	108-112	116-124	128-132	136-140
<b>A</b>	CHEST (FULL)	100	108	116	124	132	140
<b>B</b>	ACROSS BACK (18CM BELOW NECK)	39	41	43	45	47	49
<b>C</b>	SLEEVE LENGTH (12CM BELOW NECK)	47.5	49	50.5	52	53.5	55
<b>D</b>	CHEF JACKET LENGTH	78	78	81	81	82	82
<b>E</b>	HEM (FULL)	98	106	114	122	130	138